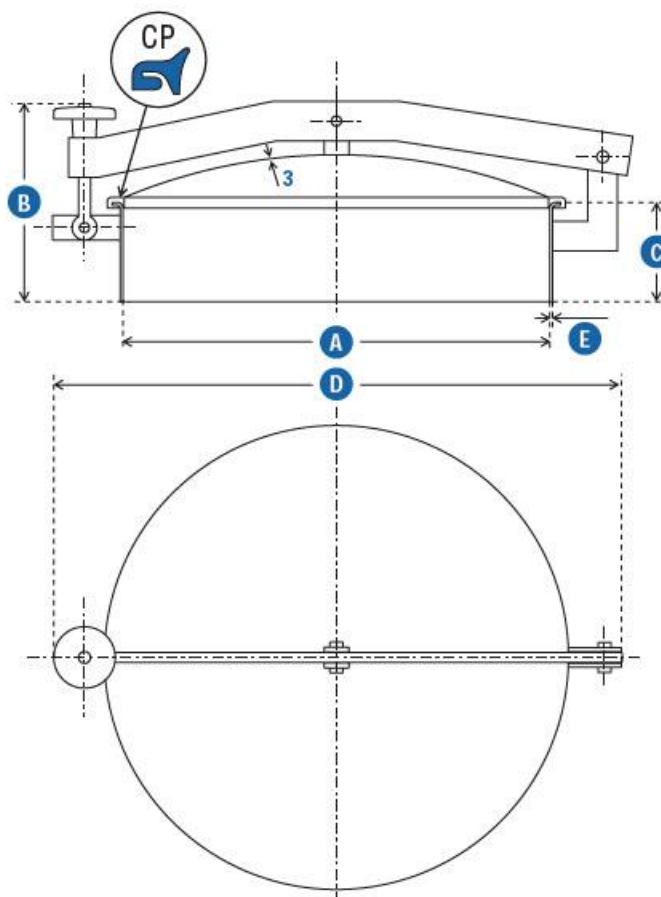
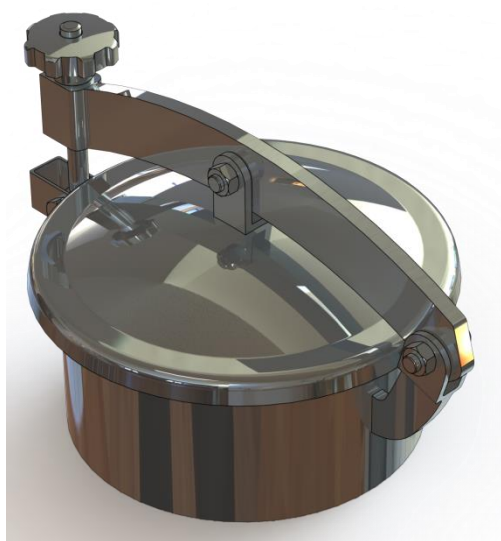









## Product Datasheet

## Round External Doors - Single Arm, Hinged with Hygienic Lip Seal & Retention Free Cover

### P31-200

Non-Pressure Hygienic Access Covers (300/400/500/600)



Code	A	B	C	D	E	PS		
P31-200	200	337	100	205	3	0.8		5
P31-300	300	441	100	441	3	0.3		8
P31-400	430	596	100	569	3	0.2		11
P31-500	500	651	100	651	3	0.1		13
P31-600	600	780	100	780	3	0.05		15

This Data Sheet refers to the material as supplied. The information contained herein is given in good faith, but no liability will be accepted by the Company in relation to same. We reserve the right to change the details given on this Data Sheet as additional information is acquired. Customers requiring the latest version of this Data Sheet should contact our sales department.

Unit N2, Gildersome Spur, Gildersome, Leeds, LS27 7JZ | Tel: 0113 252 6712 | Email: [info@manways.co.uk](mailto:info@manways.co.uk) | [www.manways.co.uk](http://www.manways.co.uk)