

Round External Doors - Rim Clamp, Loose Lid

P32-305

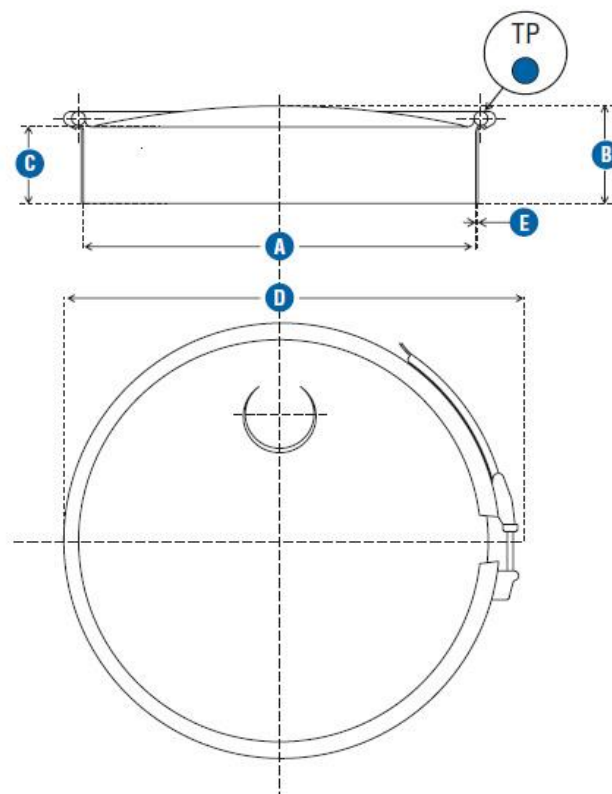
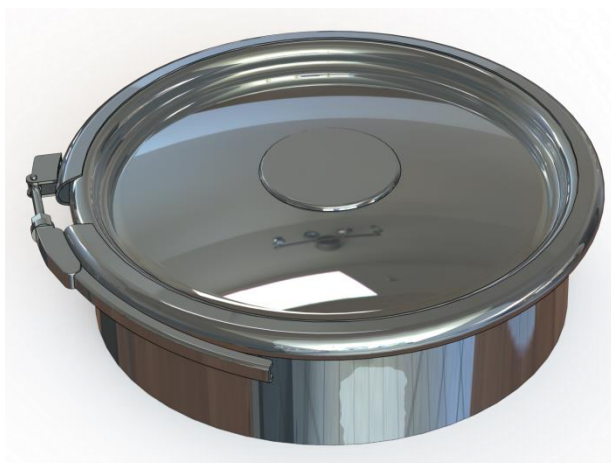
Clamp Manlids (405/705/805)







Material: 316L

Finish: Electropolish

Seal: EPDM as standard

Seal Options: Nitrile, Neoprene, Silicon, Natural Rubber, PTFE Braided



Code	A	B	C	D	E	PS		
P32-305	300	103	80	363	2	1.2		3
P32-405	400	103	80	463	2	1		5
P32-705	500	145	80	563	2	1		8
P32-805	600	142	80	663	2	0.6		10

This Data Sheet refers to the material as supplied. The information contained herein is given in good faith, but no liability will be accepted by the Company in relation to same. We reserve the right to change the details given on this Data Sheet as additional information is acquired. Customers requiring the latest version of this Data Sheet should contact our sales department.

Unit N2, Gildersome Spur, Gildersome, Leeds, LS27 7JZ | Tel: 0113 252 6712 | Email: info@manways.co.uk | www.manways.co.uk