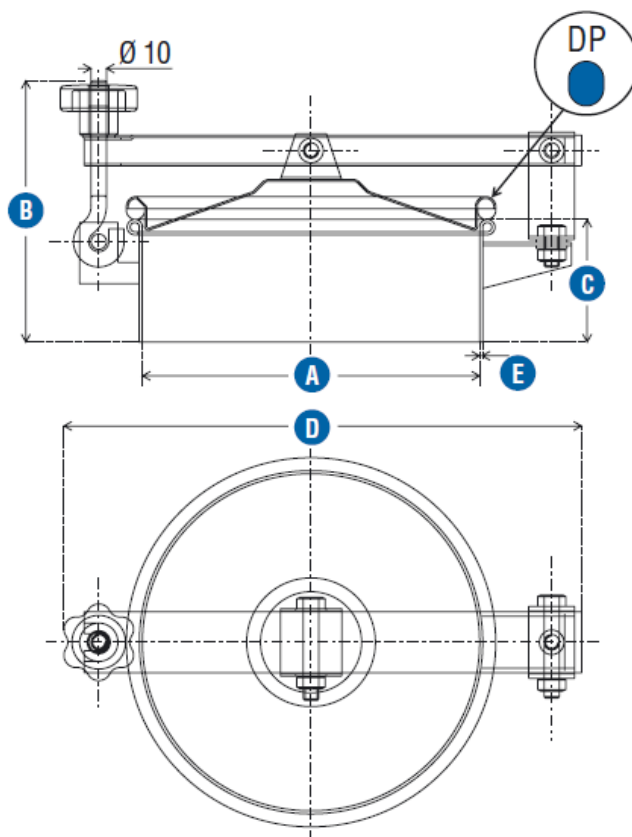
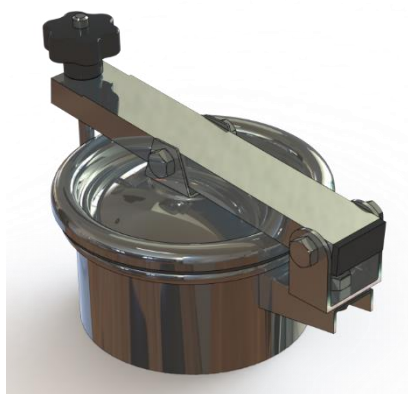










Product Datasheet

Round External Doors - Single Arm, Hinged

P33-150

Non-Pressure Access Cover (230/330/430/530/630)



Code	A (ID)	B	C	D	E	PS		
P33-150	145	168	80	262	1.5	0.4		3
P33-230	220	175	80	338	2	0.1		4
P33-330	296	175	80	417	2	0.1		5
P33-430	393	175	80	515	2	0.05		8
P33-530	500	175	80	618	2	0.05		9
P33-630	600	175	80	718	2	0.05		11

This Data Sheet refers to the material as supplied. The information contained herein is given in good faith, but no liability will be accepted by the Company in relation to same. We reserve the right to change the details given on this Data Sheet as additional information is acquired. Customers requiring the latest version of this Data Sheet should contact our sales department.

Unit N2, Gildersome Spur, Gildersome, Leeds, LS27 7JZ | Tel: 0113 252 6712 | Email: info@manways.co.uk | www.manways.co.uk