

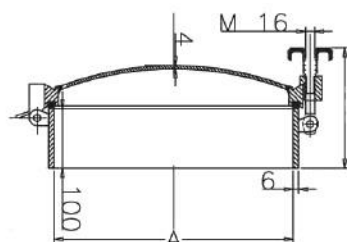
## Round External Doors - Multi Hand Wheels, with Hinge

**P06-D2**



### Description:

+/-1 bar multi clamp with hinge non PED.  
Full Vacuum  
Special frame heights are available on request  
(Minimum quantities will apply)  
300mm to 800mm diameter suitable for 1 bar  
4mm Lid Thickness  
6mm Thick Neckring

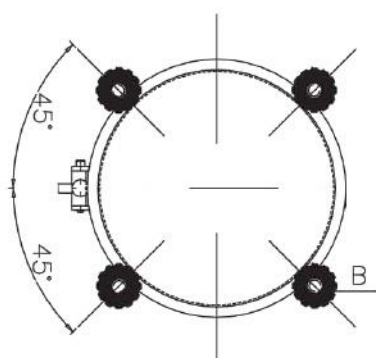


### Material:

\*150 - 250mm Diameter suitable for -1 to +15 bar  
18mm Lid Thickness  
8mm Thick Neckring

### Finish:

316 (304 available as an option)  
Standard brushed finish, option of polishing to customer specification.



	150 Dia	200 Dia	250 Dia	300 Dia	400 Dia	450 Dia	500 Dia	600 Dia	700 Dia	800 Dia
A	154	202	250	310	410	460	510	610	700	800
B	Nr 3	Nr 4	Nr 4	Nr 4	Nr 4	Nr 4	Nr 4	Nr 6	Nr 8	Nr 8

This Data Sheet refers to the material as supplied. The information contained herein is given in good faith, but no liability will be accepted by the Company in relation to same. We reserve the right to change the details given on this Data Sheet as additional information is acquired. Customers requiring the latest version of this Data Sheet should contact our sales department.

Unit N2, Gildersome Spur, Gildersome, Leeds, LS27 7JZ | Tel: 0113 252 6712 | Email: [info@manways.co.uk](mailto:info@manways.co.uk) | [www.manways.co.uk](http://www.manways.co.uk)